



THE **KELONG**  
MENU





Prawn Mayonnaise  
鲜果虾沙拉

## Hot & Cold Platter

冷热前菜

Luxury Lobster Combination 

豪华龙虾拼盘

780 small 1,300 large

Kelong Combination


奎笼拼盘

460 small 920 large

Prawn Mayonnaise

鲜果虾沙拉

240 small 480 large

Thai Seafood Salad 

泰式海鲜沙拉

280 small 560 large

## Soup

汤羹

Chicken Double Herbal

滋补养生鸡汤

170 small 260 medium 340 large

Braised Scallop Broth 

龙皇干贝带子羹

240 small 365 medium 480 large

Crab Meat and Sweet Corn Soup

蟹肉粟米汤

170 small 260 medium 340 large

Szechuan Seafood Soup 

四川海鲜汤

Bamboo Shoots Seafood Soup 

竹笙海鲜汤

Tom Yum Seafood Soup 

冬炎海鲜汤

220 small 350 medium 440 large



Tom Yum Seafood Soup  
冬炎海鲜汤

 Chef Recommendation 厨师推介

 Contain Nuts 含有花生或坚果

 Spicy 辣味

All prices are subject to 10% Service Charge and 11% Government Tax and represented in thousand rupiah ('000').

All food items are subject to change according to seasonality and availability.

Please inform our friendly server of any special dietary request, restrictions or allergies.

上述价格并收取10%的服务费和11%的现行政府税，以千印尼盾为单位('000')。

Stone Crab 95 / 100g

石蟹

Flower Crab 55 / 100g

花蟹

Wok Fried with Butter and Egg Yolk 🌶️

奶皇螃蟹

Chilli Sauce 🌶️

辣椒螃蟹

Wok-fried and Tossed in Black Pepper 🍴 🌶️

黑胡椒螃蟹

Sautéed with Ginger and Spring Onion

炒姜葱螃蟹

Salted Egg with Honey 🍴 🌶️

咸蛋蜜汁式螃蟹

Steamed or Fried Bun

蒸或炸馒头

21 / pc



🍴 Chef Recommendation 厨师推介

🥜 Contain Nuts 含有花生或坚果

🌶️ Spicy 辣味

All prices are subject to 10% Service Charge and 11% Government Tax and represented in thousand rupiah ('000').

All food items are subject to change according to seasonality and availability.

Please inform our friendly server of any special dietary request, restrictions or allergies.

上述价格并收取10%的服务费和11%的现行政府税，以千印尼盾为单位 ('000')。

## Live Fish

### 游水鱼

Sea Bass

金目鲈

75 / 100g

Black Snapper

黑鲷鱼

80 / 100g

Black Garoupa

黑石斑鱼

90 / 100g

Red Garoupa

红石斑鱼

130 / 100g

## Preparation

### 烹调方式

Steamed Hong Kong Style 🍴

港式蒸

Steamed Teochew Style

潮州蒸

Steamed Nyonya Style 🍴 🌶️

娘惹蒸

Sweet and Sour

糖醋式

Deep Fried with Superior Sauce

油浸豉油皇汁

Deep Fried with Kelong Chilli 🌶️

油浸奎龙特制辣椒



Deep Fried with Superior Sauce  
油浸豉油皇汁

🍴 Chef Recommendation 厨师推介

🥜 Contain Nuts 含有花生或坚果

🌶️ Spicy 辣味

All prices are subject to 10% Service Charge and 11% Government Tax and represented in thousand rupiah ('000').

All food items are subject to change according to seasonality and availability.

Please inform our friendly server of any special dietary request, restrictions or allergies.

上述价格并收取10%的服务费和11%的现行政府税，以千印尼盾为单位 ('000')。

# Lobster

龙虾

180 / 100g

Steamed with Garlic

蒜蓉蒸龙虾

Deep Fried with Butter 🌶️

酥炸奶油龙虾

Ginger and Scallion

香炒姜葱式龙虾

Salted Egg with Honey 🍯 🌶️

咸蛋蜜汁龙虾

Chilli Sauce 🌶️

特制辣椒炒龙虾



Steamed Lobster with Garlic

蒜蓉蒸龙虾

👨‍🍳 Chef Recommendation 厨师推介

🥜 Contain Nuts 含有花生或坚果

🌶️ Spicy 辣味

All prices are subject to 10% Service Charge and 11% Government Tax and represented in thousand rupiah ('000').

All food items are subject to change according to seasonality and availability.

Please inform our friendly server of any special dietary request, restrictions or allergies.

上述价格并收取10%的服务费和11%的现行政府税，以千印尼盾为单位 ('000')。

## Prawn

虾

Tossed In Butter 🌶️

酥炸奶油鲜虾

Salted Egg with Honey 🌶️

咸蛋蜜汁鲜虾

Sweet and Sour

糖醋汁鲜虾

Black Pepper 🌶️

黑胡椒鲜虾

Nyonya Style 🍴 🌶️

娘惹式鲜虾

Steam with Garlic

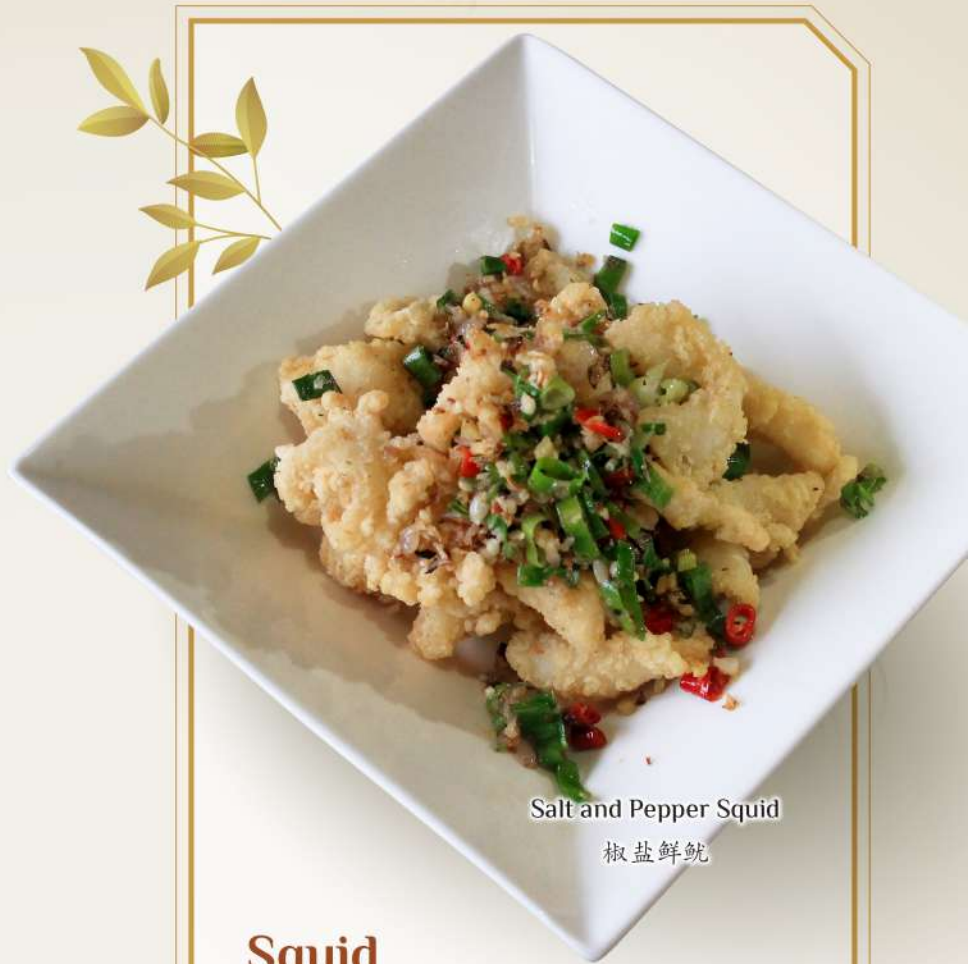
蒜蓉蒸鲜虾

220 small    325 medium    440 large

Thai Prawns with Glass Vermicelli 🌶️

泰式鲜虾冬粉煲

330



## Squid

鲜鱿

Wok Fried with XO Sauce 🌶️

香炒至尊XO酱鲜鱿

Salted Egg with Honey 🌶️

咸蛋蜜汁鲜鱿

Salt and Pepper 🌶️

椒盐鲜鱿

Crispy Fried Calamari

酥炸鲜鱿

190 small    285 medium    380 large

🍴 Chef Recommendation 厨师推介

🌰 Contain Nuts 含有花生或坚果

🌶️ Spicy 辣味

All prices are subject to 10% Service Charge and 11% Government Tax and represented in thousand rupiah ('000').

All food items are subject to change according to seasonality and availability.

Please inform our friendly server of any special dietary request, restrictions or allergies.

上述价格并收取10%的服务费和11%的现行政府税，以千印尼盾为单位 ('000')。

## Steamed Fresh Scallop On The Shell

蒸鲜贝

With Garlic

蒜蓉蒸鲜贝

With Black Beans 

豆豉蒸鲜贝

200 small    300 medium    400 large



Steamed Fresh Scallop with Garlic

蒜蓉蒸鲜贝

## Wok Fried Fresh Scallop

干炒鲜贝

With Broccoli

鲜贝炒西兰花

With XO Sauce 

鲜贝炒XO酱

330 small    495 medium    660 large



Gong-Gong (Sea Snail)

白酌贡贡(当地海螺)

## Gong-Gong (Sea Snail)

白酌贡贡(当地海螺)

180 small    265 medium    360 large

 Chef Recommendation 厨师推介

 Contain Nuts 含有花生或坚果

 Spicy 辣味

All prices are subject to 10% Service Charge and 11% Government Tax and represented in thousand rupiah ('000').

All food items are subject to change according to seasonality and availability.

Please inform our friendly server of any special dietary request, restrictions or allergies.

上述价格并收取10%的服务费和11%的现行政府税，以千印尼盾为单位('000')。

## Chicken

鸡肉

Kelong Crispy Chicken

奎龙脆皮炸子鸡

150 half      300 whole

Sweet and Sour Chicken Treasure Basket

糖醋鸡块篮

Lemon Chicken

柠檬鸡

Kong Bao Chicken  

宫保鸡丁

140 small      205 medium      280 large



Kong Bao Chicken  
宫保鸡丁



Black Pepper Beef  
黑胡椒炒牛肉

## Beef

牛肉

With Broccoli

牛肉西兰花

Black Pepper 

黑胡椒炒牛肉

Ginger and Scallion

姜葱炒牛肉

180 small      275 medium      360 large

 Chef Recommendation 厨师推介

 Contain Nuts 含有花生或坚果

 Spicy 辣味

All prices are subject to 10% Service Charge and 11% Government Tax and represented in thousand rupiah ('000').

All food items are subject to change according to seasonality and availability.

Please inform our friendly server of any special dietary request, restrictions or allergies.

上述价格并收取10%的服务费和11%的现行政府税，以千印尼盾为单位('000')。



## Bean Curd & Eggs

豆腐和蛋

Seafood Bean Curd

海鲜焖豆腐

160 small    230 medium    320 large

Bean Curd with Crab Meat Sauce

豆腐蟹肉酱

240

Seafood Omelette

海鲜煎蛋

140 small    200 medium    280 large

Steamed Egg

蒸蛋


100 small    150 medium



Bean Curd with Crab Meat Sauce

豆腐蟹肉酱

 Chef Recommendation 厨师推介

 Contain Nuts 含有花生或坚果

 Spicy 辣味

All prices are subject to 10% Service Charge and 11% Government Tax and represented in thousand rupiah ('000').

All food items are subject to change according to seasonality and availability.

Please inform our friendly server of any special dietary request, restrictions or allergies.

上述价格并收取10%的服务费和11%的现行政府税，以千印尼盾为单位 ('000')。

# Vegetables

蔬菜

Kang Kong with Sambal

空心菜叁峇辣椒

Kang Kong

空心菜

Siew Bok Choy

小白菜

120 small

180 medium

240 large



Kailan with Oyster Sauce

芥兰蚝油

Kailan

芥兰

130 small

195 medium

260 large

Preparation : Garlic / Sambal 🌶️ / Oyster Sauce

烹调方式: 蒜蓉 / 叁峇辣椒 / 蚝油

Broccoli with Braised Mushrooms

西兰花焖菇

150 small

215 medium

300 large

Eggplant and Salted Fish

咸鱼炒茄子

100 small

150 medium

200 large

👨‍🍳 Chef Recommendation 厨师推介

🥜 Contain Nuts 含有花生或坚果

🌶️ Spicy 辣味

All prices are subject to 10% Service Charge and 11% Government Tax and represented in thousand rupiah ('000').

All food items are subject to change according to seasonality and availability.

Please inform our friendly server of any special dietary request, restrictions or allergies.

上述价格并收取10%的服务费和11%的现行政府税，以千印尼盾为单位 ('000')。



Malay Fried Noodles

马来炒面

## Noodles

面

Malay Fried Noodles 🌶️

马来炒面

Stir-Fried Hong Kong Noodles

干炒香港面

Seafood Noodles Soup

海鲜面汤

Bee Hoon Soup

米粉汤

Singapore Bee Hoon

星洲炒米粉

Seafood Glass Noodles

海鲜焖冬粉

140 small    210 medium    280 large

## Rice

饭

Fried Rice with X.O Sauce 🌶️

X.O 炒饭

170 small    250 medium    340 large

Thai Seafood Fried Rice

泰式海鲜炒饭

Salted Fish and Chicken Fried Rice

咸鱼鸡肉炒饭

Pineapple Seafood Fried Rice

黄梨海鲜炒饭

150 small    220 medium    300 large

Steamed Rice

白米饭

30 / portion



Pineapple Seafood Fried Rice

黄梨海鲜炒饭

 Chef Recommendation 厨师推介

 Contain Nuts 含有花生或坚果

 Spicy 辣味

All prices are subject to 10% Service Charge and 11% Government Tax and represented in thousand rupiah ('000').

All food items are subject to change according to seasonality and availability.

Please inform our friendly server of any special dietary request, restrictions or allergies.

上述价格并收取10%的服务费和11%的现行政府税，以千印尼盾为单位 ('000')。

## Vegetarian

素食

Vegetable Spring Rolls

炸素春卷

100 small    150 medium    200 large

Vegetarian Sweet Corn Soup

粟米汤

Vegetarian Bamboo Soup

竹笙蔬菜汤

Stir Fried Mix Vegetables

素炒杂菜

110 small    160 medium    220 large




Vegetable Spring Rolls

炸素春卷

Sweet and Sour Mock Chicken

酸甜素鸡丁

Mock Lamb with Pepper 

黑胡椒素羊柳

Vegetarian Bee Hoon

素炒米粉

Vegetarian Fried Rice

素炒饭

130 small    190 medium    260 large



Vegetarian Bee Hoon

素炒米粉

 Chef Recommendation 厨师推介

 Contain Nuts 含有花生或坚果

 Spicy 辣味

All prices are subject to 10% Service Charge and 11% Government Tax and represented in thousand rupiah ('000').

All food items are subject to change according to seasonality and availability.

Please inform our friendly server of any special dietary request, restrictions or allergies.

上述价格并收取10%的服务费和11%的现行政府税，以千印尼盾为单位('000')。

## Dessert

### 甜点

Deep Fried Banana

炸香蕉

110 small    160 medium    220 large

Fresh Fruit Platter

鲜果拼盘

120 small    180 medium    240 large

Honeydew Sago

蜜瓜西米露

50 / portion

Coconut Jelly

椰子果冻

50 / portion

Sea Coconut

海椰子

50 / portion

Ice Cream

冰淇淋

Vanilla    50

香草

Chocolate    50

巧克力



Honeydew Sago

蜜瓜西米露

## Kids Menu

### 儿童餐点

Three Combo (Fried Rice, Sausage, Boiled Egg)

三拼组合 (炒饭, 香肠, 水煮蛋)

95

Cheese Chicken Nugget With Fries

芝士鸡块和薯条

95

Soya Noodle Chicken

豆签鸡肉面

95

 Chef Recommendation 厨师推介

 Contain Nuts 含有花生或坚果

 Spicy 辣味

All prices are subject to 10% Service Charge and 11% Government Tax and represented in thousand rupiah ('000').

All food items are subject to change according to seasonality and availability.

Please inform our friendly server of any special dietary request, restrictions or allergies.

上述价格并收取10%的服务费和11%的现行政府税，以千印尼盾为单位 ('000')。

